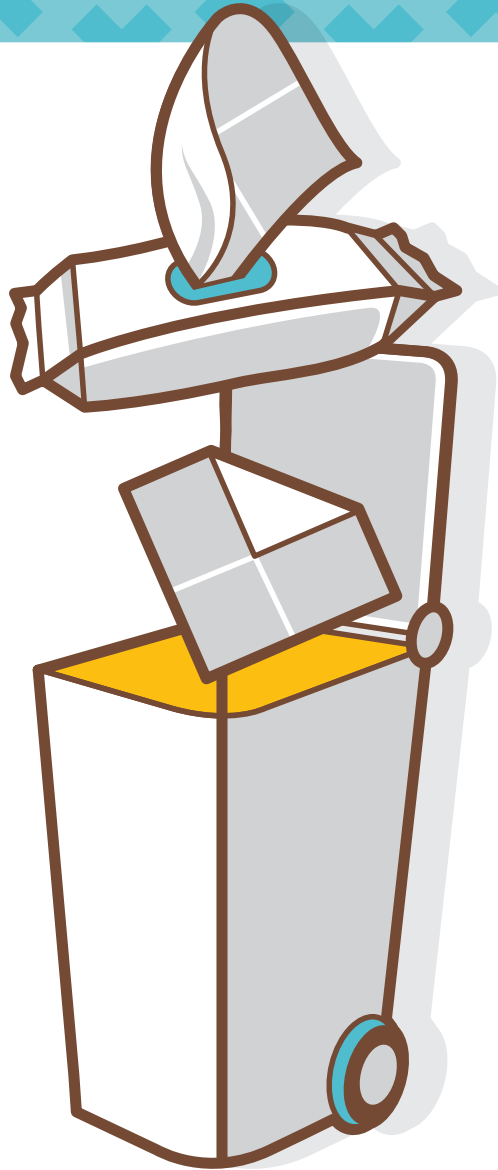


# CLOTHS?

Not down the drain!

Fibre cloths, wet wipes and damp cloths cause blockages in the drain.

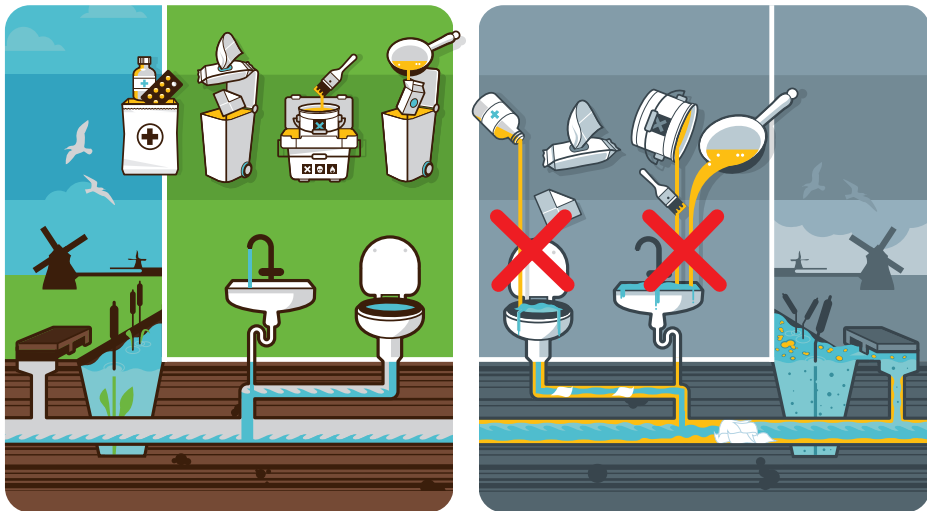
Tip: put a waste bin next to the toilet!



# Why practise good drain use?

Properly functioning drains are important for public health. Waste water in the drains is purified, so that it can go back clean into nature.

You can contribute to properly functioning drains and clean water by only using the toilet for what it's intended for: poo, wee and toilet paper!



f nietinhetriool | e @nietinhetriool | w www.nietinhetriool.nl

[Your logo]

Keep our water clean

NIET IN HET



RIOOL